

+

+

+

+

+

+



+

+

+

+

+

PRODUCT CATALOG
OCT 2021

INTRODUCTION

04	Our Brand Story The Original Mini PC
----	---

PERFORMANCE LARGER THAN ITS SIZE

06	Do With Less Do With More
07	Compact Footprint Versatile
08	Robust Connectivity Automate Power Recovery

PRODUCT SERIES

10	Engineered For Many Applications
----	----------------------------------

Entertainment

11	E Series
16	VR Series

Fanless Solutions

19	C Series
25	P Series

Business and Daily Computing

30	ZBOX PRO
34	M Series

Creation

40	Q Series
44	Inspire Studio

47	Compare ZBOX Series
48	Choose your Own ZBOX
49	Awards
50	Media Reviews



INTRODUCTION



ZOTAC creates the Original Mini PC by

shrinking the desktop PC into a miniature form,



beginning the trend of space-saving PCs.

OUR BRAND STORY

**WE ARE ZOTAC, A GLOBAL MANUFACTURER OF INNOVATION,
PERFORMANCE, AND TECHNOLOGY.**

ZOTAC derives its name from the words "zone," for being distinct in the PC components and systems industry, and "tact," for our superior skill, expertise, quality, and manufacturing capabilities.

With "PUSH THE LIMIT" as our motto, we are determined to redefine the standard of graphics cards, Mini PCs, and accessories to break into new realms and connect people with

fast-moving technologies and experiences such as eSports and VR gaming.

Since our establishment in 2006 under the umbrella of PC Partner, we have put innovation at the forefront of our philosophy, and have dedicated a lot of energy to developing new technologies in order to enrich user experience.

THE ORIGINAL MINI PC

INNOVATING THE PC IN EVERY BEST MINI WAY

As the First and Original Mini PC maker, we are dedicated to making the ZBOX ever more powerful and versatile, from the palm sized ZBOX nano to the extreme smart phone-sized ZBOX pico, following the first gaming and VR-ready Mini PC and the world's premier VR backpack.

We believe there is a Mini PC for everyone and for any computing problem. Whether you are an architect with the next Hagia Sophia in mind, or simply wanting to enjoy the evening with intense gaming, we have a Mini PC that is the perfect fit.

PERFORMANCE LARGER THAN ITS SIZE

“The small footprint design and rich expansion capabilities make ZBOX Mini PCs ideal for the needs of diverse projects.”



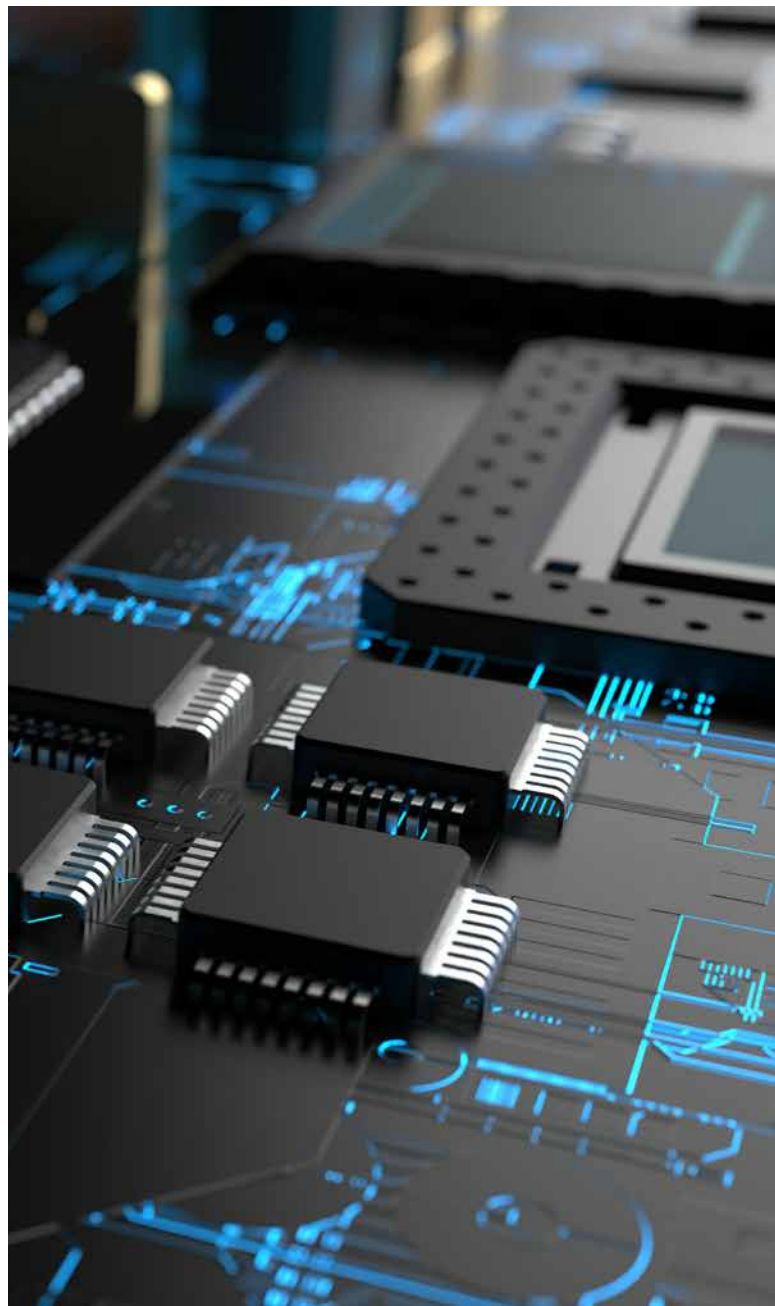
DO WITH LESS



Using less than 10 watts when idle, you'll be saving more than just on space and upfront costs - the smart investment for your bills and the planet.

*idle power use may vary by model

DO WITH MORE



With powerful processors from Intel or AMD, equip yourself with multi-core processors to do what you need done faster.

PERFORMANCE LARGER THAN ITS SIZE

COMPACT FOOTPRINT



ZBOX gets things done just like a PC in a much more portable package, bringing endless usable possibilities.

VERSATILE



Choose from multiple sized solutions that are capable of powerful performance and nimble placement provided by the designed VESA mounting compatibility built in or included stand accessory. Place the system where you want. Lay it on the desk, hide it behind a display, or hang it on the wall.

ROBUST CONNECTIVITY



ZOTAC Mini PC Series offers a wide array of ports, featuring USB Type-C and 3.1, (Killer) Wi-Fi, Bluetooth, (Killer) Ethernet, SD card slot, headphone and microphone, HDMI, DisplayPort, VGA and more.

AUTOMATE POWER RECOVERY



With an available Power Recovery feature, the ZOTAC Mini PC can automatically power itself back on and get going when power is restored after a sudden power loss. It can even return to its last state of power or simply stay off when power is restored after a sudden power loss. Set applications to load at start up in combination with this Power Recovery feature and you have a powerful Mini PC that can continue to operate.

PRODUCT SERIES



Game and stream. Work and manage.

Surf and create. Watch and chill. Show and

market. ZBOX has a strong purposeful

line-up, each designed for general, unique,

or powerful needs to push the capabilities



and experiences beyond.

ENGINEERED FOR MANY APPLICATIONS



ENGINEERED FOR MANY APPLICATIONS

THE SMALL FOOTPRINT DESIGN AND RICH EXPANSION CAPABILITIES MAKE ZBOX MINI PCS IDEAL FOR THE NEEDS OF DIVERSE PROJECTS.

ENTERTAINMENT

ZBOX Mini PCs feature the latest processors from Intel or AMD and powerful graphics performance for a memorable experience in gaming, casino, virtual reality, servers, and more. Our VR ready systems have been deployed in theme parks, exhibitions and movie screenings to create a more engaging user experience.



FANLESS SOLUTIONS

We offer completely fanless designs that bring silent performance, longevity, and unrivaled features with an energy sipping power and efficient cooling hardware.



BUSINESS AND DAILY COMPUTING

ZBOX Mini PCs are designed to meet all your business and everyday PC needs. Throughout the years we have developed partnerships with world-leading providers, implementing our ZBOX Mini PCs powering digital signage, cloud solutions and networkable appliances.



CREATION

Miniature but powerful workstation solutions can pave way for more productivity. Manage your creative workflow with more efficiency, and enjoy the best possible performance for demanding creative, scientific or financial computing projects.





SERIES



FOR HARDWARE ENTHUSIASTS

THE ZBOX "MAGNUS" E SERIES HOUSES DESKTOP CHALLENGING PERFORMANCE TO EMPOWER GAMERS, CREATORS AND ENTHUSIASTS. WITH POWERFUL MULTI-CORE PROCESSORS AND EASILY EXPANDABLE STORAGE AND MEMORY, THE ZBOX MAGNUS ALLOWS GAMERS TO PLAY BIG WITH POWER ON PAR WITH DESKTOP SYSTEMS MANY TIMES ITS SIZE AND WEIGHT.

DEDICATED GRAPHICS

Take advantage of abundant graphics horsepower with a dedicated NVIDIA® GeForce® GPU for creative workflows and GPU accelerate for demanding graphic intensive needs.

GAME READY

With a powerful CPU and GPU processor and support for high-speed memory and high performance storage, MAGNUS is ready to take on today's AAA PC game titles and beyond.

DELUXE ENTERTAINMENT

Stream your gameplay or game on the largest display in the household for an at-home cinematic experience.

SEAMLESS CONNECTIVITY

Fast networking lets you lose the lag and enables downloading and uploading content with premium connectivity.

EASILY UPGRADEABLE

Designed with quick access to memory and storage of your choice. Upgrading has never been easier.

DIGITAL SIGNAGE

Show more with up to 4 simultaneous 4K displays with a compact system that can easily be tucked away behind the scenes.



MAGNUS ONE ECM73070C

Empower everything in one incredibly powerful, versatile Mini PC. MAGNUS ONE boasts the ultimate performance in an all-new and compact design. It is the first Mini PC taking advantage of the ZOTAC GAMING GeForce RTX™ 3070 graphics card for high-fidelity ray-traced graphics and cutting-edge AI features with DLSS. Paired with a 10th Gen Intel® Core™ i7 processor, upgradable memory and storage support, full-range connectivity options with Killer networking, MAGNUS ONE has the do-it-all capability to deliver the best experience for daily tasks, gaming, entertainment, content creation and business.

SPECIFICATIONS

- 10th Gen Intel Core i7 processor
- ZOTAC GAMING GeForce RTX 3070 8GB GDDR6
- Up to 64GB DDR4-2933/2666 memory support
- 1 x HDMI 2.1, 3 x DisplayPort 1.4a, 1 x HDMI 1.4 (integrated)
- 4 x USB 3.1 GEN2, 4 x USB 3.0 (1 Type-C)
- Killer WiFi, Gigabit and 2.5Gbps Ethernet
- 500W 80+ Platinum power supply
- Creator Ready / 4K Ready / Gaming Ready / VR Ready



reddot winner 2021



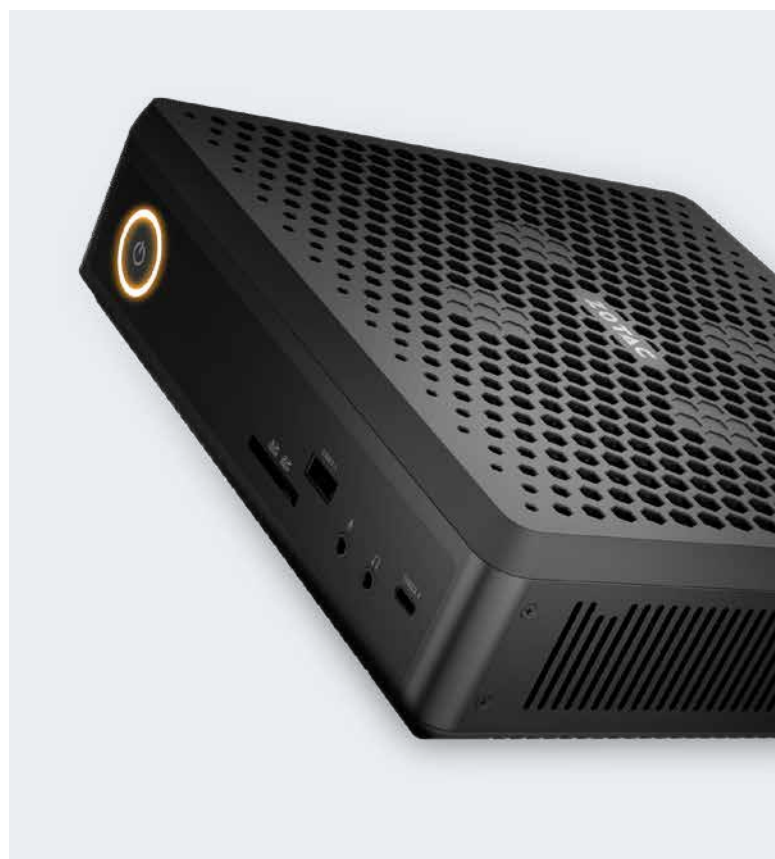


MAGNUS EN072080S

Built for gamers and hardware enthusiasts, MAGNUS EN072080S is empowered with a 10th Gen Intel® Core™ i7 processor, NVIDIA GeForce® RTX SUPER™ GPU and premium connectivity. Re-engineered with breathability and striking the perfect balance between power and thermals for robust performance, this is the ultimate travel friendly system for VR and Gaming and a perfect fit for a powerful workstation and 4K ready home theater PC.

SPECIFICATIONS

- Intel® Core™ i7-10750H processor (six-core 2.6 GHz, up to 5.0 GHz)
- NVIDIA GeForce RTX 2080 SUPER 8GB GDDR6 256-bit
- 2 x DDR4-2933/2666 SO-DIMM slots (up to 64GB)
- M.2 PCIE x4 / SATA III SSD slot (2242/2280)
- 2.5-inch SATA 6.0 Gbps HDD/SSD bay
- Intel® Optane™ memory slot (2242/2280)
- 2 x HDMI 2.0, 2 x DisplayPort 1.4
- 2 x USB 3.1 Gen 2 ports (1 Type-C), 4 x USB 3.0 ports
- Killer Wi-Fi 6 and Killer 2.5Gbps Ethernet



VIEW ALL
MODELS



MODELS	MAGNUS ONE ECM73070C	MAGNUS ONE ECM53060C	MAGNUS EN072080S	MAGNUS EN072070S	MAGNUS EN052060C	MAGNUS EC52060S
CPU	Intel Core i7	ntel Core i5	Intel Core i7		Intel Core i5	
GPU	GeForce RTX 3070	GeForce RTX 3060	GeForce RTX 2080 SUPER	GeForce RTX 2070 SUPER	GeForce RTX 2060	GeForce RTX 2060 SUPER
MEMORY	Dual SO-DIMM DDR4 slots					
HDMI	HDMI 2.1 x 1		HDMI 2.0 x 2			HDMI 2.0 x 1
DISPLAYPORT	x 3		x 2			x 3
USB 3.1 TYPE-C			x 1			
USB 3.1	x 4		x 1			x 5
USB 3.0 TYPE-C	x 1					
USB 3.0	x 3		x 4			
WIFI	WiFi 6					
LAN	Gigabit LAN + 2.5G LAN					
BLUETOOTH	Bluetooth 5					
DIMENSIONS	265.5mm x 126mm x 249mm (10.45in x 4.96in x 9.8in)		210mm x 203mm x 62.2mm (8.27in x 7.99in x 2.45in)			225mm x 203mm x 128mm (8.86in x 7.99in x 5.04in)

FOR HARDWARE
ENTHUSIASTS



VR
SERIES

UNSTOPPABLE FREEDOM

THE ZOTAC VR GO BACKPACK PC IS DESIGNED FOR UNLOCKING THE POTENTIAL OF VR ACROSS INDUSTRIES AND BUSINESSES IN ENTERTAINMENT, PRODUCT DEVELOPMENT, MEDICAL PRACTICE, DESIGN, EDUCATION, CUSTOMER SERVICE, ESPORTS, AND MUCH MORE. INTEGRATING MOBILITY AND HIGH-PERFORMANCE HARDWARE, THE BACKPACK SOLUTION EMPOWERS LIFE-LIKE IMMERSION WITH ZERO COMPROMISES TO LATENCY AND REDUCTION IN VISUAL QUALITY WITH TODAY'S LEADING VR HEADSETS.

CONTINUOUS COMFORT

The VR GO backpack PC system is designed to be worn for continuous action with an even weight distribution, added foam padding on the back support and shoulder straps, and an extended length back support.

DEDICATED GRAPHICS

Immerse in incredible realism and performance with the powerful NVIDIA GeForce RTX™ graphics hardware.

POWERFUL PERFORMANCE

Take performance to the next-level with a powerful multithreaded Intel® Core™ processor.

HOT-SWAPPABLE

Rechargeable and swappable external Li-ion batteries enable near limitless playtime.

POWER NOTIFICATIONS

See with easy visibility the power status of each battery and hear with precision when power is low.

IDENTIFICATION

With SPECTRA 2.0 RGB lighting, assign an individual's backpack or a team of backpacks a specific color for easy visual location and identification.

MORE THAN VR READY

Detach the VR GO system from the backpack accessory and use it as a standalone powerful system powered by batteries or connected to a wired power source.



ZOTAC VR GO 3.0

Featuring the powerful and efficient NVIDIA® GeForce RTX™ and Intel® Core™ processor, the VR GO 3.0 backpack PC untethers the VR experience to let users enjoy full immersion VR without any obstacles. Unshackle from the traditional platform and strap on the freedom of the ZOTAC VR GO.

SPECIFICATIONS

- Intel Core i7-9750H (six-core 2.6 GHz, up to 4.5 GHz)
 - NVIDIA GeForce RTX™ 2070 (8GB GDDR6 256-bit)
 - 240GB M.2 SSD
 - 16GB DDR4 SO-DIMM (Max 32GB)
 - 1 x 2.5-inch SATA 6.0 Gbps HDD/SSD bay
 - 2 x HDMI 2.0, 1 x DisplayPort 1.4
 - 6 x USB 3.0 ports
 - 802.11ac WiFi & Bluetooth 5
 - Gigabit Ethernet (RJ45)
 - SPECTRA 2.0 RGB Lighting
 - Microsoft Windows 10 Pro 64-bit Pre-installed*
 - Up to 1 hour play time
(Extend play time with hot-swappable batteries)
 - Dimensions: 347.5mm x 280.4mm x 87.1mm
(13.68in x 11.04in x 3.43in)
- * Europe regions have Microsoft Windows 10 Pro N





C
SERIES



THE STRONG, SILENT TYPE

DESIGNED AND ENGINEERED TO BE FAN-LESS FOR SILENT PERFORMANCE. THE POTENTIAL TO PERFORM, THE RESILIENCE OF HARDWARE, AND ONE OF THE SMALLEST OF FORM FACTOR OPEN UP A VASTNESS OF OPPORTUNITY AND FLEXIBILITY WHERE ONLY THE ZBOX C SERIES IS A SOLUTION.

SILENT PERFORMANCE

Built for silent performance, the ZBOX C Series is wrapped in a pattern of one of nature's strongest natural structure, the honeycomb. With up to 90% of open ventilation, it enables maximum breathability for strong sustained performance.

NO MOVING PARTS

With a powerful fan-less cooling solution paired with a fast SSD*, it's a combination making for a powerful silent system, and with no moving parts, enables it to continue performing silently.

*barebone models do not come equipped with storage

NIMBLE PLACEMENT

Nimble versatility and mobility is provided by the designed VESA mounting compatibility built in. Place the system where you want. Lay it on the desk, hide it behind a display, or hang it on the wall.

EASY ACCESS

Loosen just four screws, which also double as feet for the system to allow airflow to move below the system, and remove the cover to get quick and easy access to upgrade storage and memory.



ZBOX CI662 NANO

Innovating productivity with an all-new passive cooling chassis design inspired by the honeycomb, one of nature's most recognized and strongest structures. The ZBOX CI662 nano is equipped with a 10th Gen Intel® Core™ processor and passive cooling hardware capable of up to a 25W TDP processor to deliver the most powerful performance in complete silence.

SPECIFICATIONS

- Intel Core i7-10510U (quad-core 1.8GHz, up to 4.9GHz)
- Intel UHD Graphics 600 (Integrated)
- 2 x DDR4-2666/2400 SODIMM Slot (up to 32GB)
- 1 x 2.5" SATA 6Gbps HDD/SSD Slot
- 1 x HDMI 2.0, 1 x DisplayPort 1.2
- 6 x USB 3.1 ports (2 Type-C), 1 x USB 3.0
- 802.11ac WiFi & Bluetooth 5
- 2 x Gigabit Ethernet LAN





ZBOX EDGE CI341

The ZBOX C Series edge features passive cooling in an ultra-thin design. The ZBOX edge CI341 enables a more robust option with no moving components while maintaining a low-profile design and a wide range of I/O connectivity. A silent solution for edge computing and audiophiles, a nimble device for the everyday computing needs, a powerful digital signage platform with support for dual 4K displays, and so much more in a silent, ultra-thin mini PC.

SPECIFICATIONS

- Intel Celeron N4100 Processor (quad-core 1.1GHz, up to 2.4GHz)
- Intel UHD Graphics 600 (Integrated)
- 2 x DDR4-2400 SODIMM slot (up to 8GB)
- 1 x M.2 SATA SSD slot (2242/2280)
- 1 x HDMI 2.0, 1 x DisplayPort 1.2
- 3 x USB 3.0 ports (1 Type-C)
- 802.11ac WiFi & Bluetooth 4.2
- 2 x Gigabit Ethernet LAN





MODELS	ZBOX CA621 NANO	ZBOX CI662 NANO	ZBOX CI642 NANO	ZBOX CI622 NANO
CPU	AMD Ryzen 3	Intel Core i7	Intel Core i5	Intel Core i3
GPU	Radeon Vega 3 Graphics	Intel UHD Graphics		
MEMORY	Dual DDR4			
HDMI	X 1			
DISPLAYPORT	X 1			
VGA				
THUNDERBOLT 4				
USB 3.1 TYPE-C		X 2		
USB 3.1		X 4		
USB 3.0 TYPE-C				
USB 3.0	X 4	X 1		
USB 2.0				
WIFI	WiFi 5			
LAN	Dual Gigabit LAN			
BLUETOOTH	4.2	5		
DIMENSIONS	204mm x 129mm x 68mm (8.03in x 5.08in x 2.68in)			

THE STRONG, SILENT TYPE



MODELS	ZBOX EDGE CI341	ZBOX CI331 NANO	ZBOX CI329 NANO
CPU	Intel Celeron		
GPU	Intel UHD Graphics 600	Intel UHD Graphics	Intel UHD Graphics 600
MEMORY	Dual DDR4		
HDMI	X 1		
DISPLAYPORT	X 1		
VGA		X 1	
THUNDERBOLT 4			
USB 3.1 TYPE-C			
USB 3.1		X 2	
USB 3.0 TYPE-C	X 1		
USB 3.0	X 2	X 1	X 3
USB 2.0		X 1	
WIFI	WiFi 5		
LAN	Dual Gigabit LAN		
BLUETOOTH	4.2	5	
DIMENSIONS	147.2mm x 147.2mm x 32.1mm (5.80in x 5.80in x 1.26in)	127.8mm x 126.8mm x 56.8mm (5.31in x 4.99in x 2.24in)	

THE STRONG, SILENT TYPE



DIRECTORY

ALL STORES
MEN'S
WOMEN'S
DINING
ENTERTAINMENT
SHOES
SPECIALTY



SERIES

P SERIES

MINI MORE POSSIBILITIES

**HIGHLY ENERGY EFFICIENT, POWERFULLY SILENT,
AND AMAZINGLY POCKETABLE. WITH THE ZBOX P
SERIES, THE USABLE POSSIBILITIES SEEM ALMOST
ENDLESS.**

SMALL AS POSSIBLE

A computer as small as a 2.5" SSD and as thin as a #2 pencil while still capable of running a full desktop Microsoft Windows OS. One of the many questions asked is "Where's the computer?" and a regular reaction commonly received is "That's a computer?" This is the ZBOX P Series line of Mini PC where P stands for pico, pocketable, power sipping, and sometimes impossible.

SILENT PERFORMANCE

Excluding the need for active cooling components, the systems are designed with a ribbed metal exterior allowing the shell to double as a heatsink, increasing the surface area to dissipate even more system heat.

EXTENDED LONGEVITY

With a fan-less cooling solution paired with onboard solid storage, it's a combination making for an efficient silent system with no moving parts.

NIMBLE PLACEMENT

Nimble versatility and mobility is provided by the included bracket enabling mounting compatibility. Place the system where you want. Lay it on the desk, hide it behind a display, or hang it on the wall.

SMALL CARBON FOOTPRINT

With a power sipping energy efficiency, save more than just space and upfront costs.



ZBOX PI225 PICO GEMINI LAKE

Desktop performance and mobile flexibility all crammed into the world's smallest and thinnest Mini PC ever built. Combined with a symphony of silent performance and an ultra-compact design as small as a 2.5-inch SSD, the PI225 has a completely

fanless passive-cooled blueprint, no moving parts, and sipping energy efficiency. The mini more possibilities of how and where the PI225 can be used are far and wide.

SPECIFICATIONS

- Intel Celeron N4000 (dual core, 1.10 GHz)
- Intel UHD Graphics 600 (Integrated)
- 4GB LPDDR4 onboard Memory
- 64GB eMMC onboard storage
- 2 x USB 3.0 Type-C ports (USB+DP support)
- 802.11ac WiFi & Bluetooth 5
- Microsoft Windows 10 Pro 64-bit Pre-installed (Europe regions have Microsoft Windows 10 Pro N)





ZBOX PI335 PICO GEMINI LAKE

ZBOX PI335 pico doubles the viewing capacity with more power in one of the smallest form factors. With HDMI and DisplayPort outputs, greater display options are available, or use both to double your desktop size. Pre-installed with Windows, it's ready to run out of the box.

SPECIFICATIONS

- Intel Celeron N4100 (quad-core 1.1 GHz, up to 2.4 GHz)
- Intel UHD Graphics 600 (Integrated)
- 4GB LPDDR4 onboard Memory
- 64GB eMMC onboard storage
- 1 x HDMI 2.0, 1 x DisplayPort 1.2
- 3 x USB 3.0 ports (1 Type-C)
- 802.11ac WiFi & Bluetooth 5
- 1 x Gigabit Ethernet LAN
- Microsoft Windows 10 Pro 64-bit Pre-installed (Europe regions have Microsoft Windows 10 Pro N)





MODELS	ZBOX PI225 PICO GEMINI LAKE	ZBOX PI335 PICO GEMINI LAKE
CPU	Intel Celeron	
GPU	Intel UHD Graphics 600	
MEMORY	Onboard LPDDR4	
STORAGE	Onboard eMMC	
HDMI		x 1
DISPLAYPORT		x 1
USB 3.0 TYPE-C	x 2	x 1
USB 3.0		x 2
WIFI	802.11ac	
LAN		Gigabit LAN
BLUETOOTH	Bluetooth 5	
DIMENSIONS	95.4mm x 63mm x 8mm (3.76in x 2.48in x 0.31in)	115mm x 76mm x 20.7mm (4.53in x 2.99in x 0.81in)

MINI

MORE POSSIBILITIES

A blurred night scene of a city street. In the foreground, a person is walking, their figure out of focus. The background is filled with bokeh lights from street lamps and buildings, creating a dreamy, urban atmosphere. The overall color palette is dark with highlights of warm yellow and cool blue.

PRO

SERIES

EMBEDDED SOLUTIONS

**BUILT WITH PRECISE ENGINEERING AND DEEP EXPERTISE
IN COMPUTING AND MANUFACTURING, ZBOX PRO
RE-ENGINEERS THE CAPABILITIES AND SMALL FOOTPRINT
OF THE ZBOX MINI PCS WITH MORE CONTROLLED
TOLERANCES TO OFFER PROFESSIONAL PRODUCT
SELECTIONS FOR EMBEDDED COMPUTING.**

LONG LIFECYCLE

Long life cycles are important as it takes many hours to verify and validate a new component/product and integrate it into an existing process. With a long lifecycle, less R&D is needed, costs can be reduced, and planning is more stable over the long term in both hardware and software.

COMPACT

Choose from multiple sized solutions that are all capable of powerful performance.

NIMBLE PLACEMENT

Nimble versatility and mobility is provided by the designed VESA mounting compatibility built in or included stand accessory. Place the system where you want. Lay it on the desk, hide it behind a display, hang it on the wall, or mount it on a rack.

SELF-RELIANT

With an integrated hardware watchdog feature, the system can more reliably continue to operate and be integrated into more distant or more inaccessible by human places.

DURABLE

Made with strong metal, the exterior shell is more durable and less prone to exterior damage.

SEAMLESS INTEGRATION

Made entirely unbranded from the exterior, BIOS level, and even the power on splash screens, ZBOX PRO can be easily integrated into any existing process.

SAFETY STANDARDS

ZBOX PRO products are all FCC, ISED, and CE RED certified.



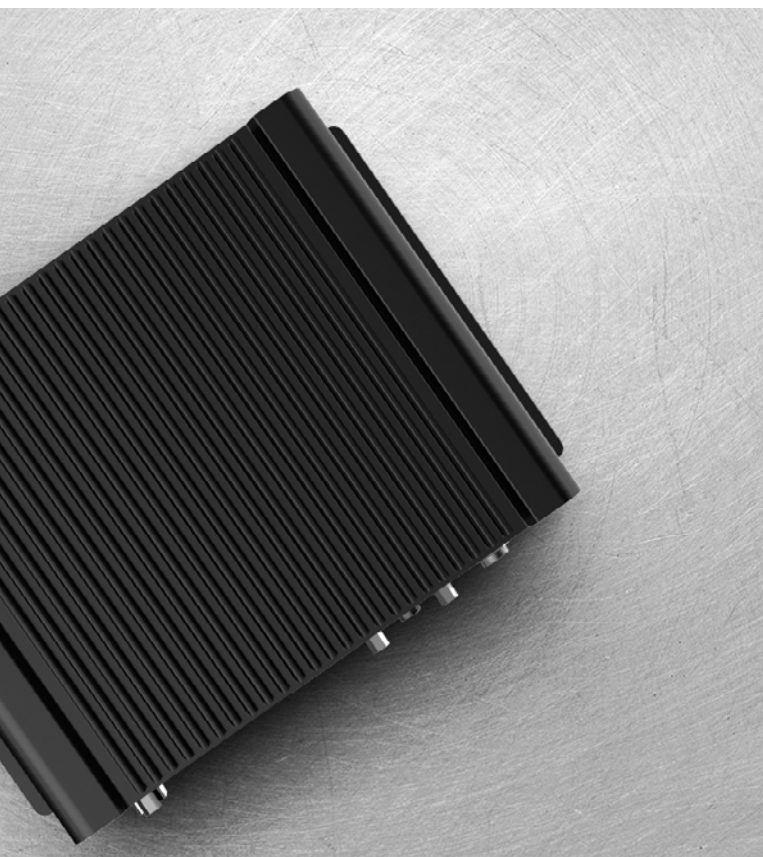
ZBOX PRO CI329 NANO

Uniqueness defines this high performance and versatile platform. With an Intel Celeron N4100 processor at its core, the ZBOX PRO CI329 nano puts the incredible power of Intel UHD Graphics in your projects, boosting efficiency for those resource intensive applications. It powers everything from

research labs to Ultra HD Digital Signage showcases. The fanless design enables this unit to be installed even at sound sensitive locations and there is an array of connectivity options including HDMI, DisplayPort, VGA, RS-232 serial port, USB 3.0 ports, and Dual Gigabit Ethernet.

SPECIFICATIONS

- Intel Celeron N4100 (quad-core 1.1GHz, up to 2.4GHz)
- 2 x DDR4-2400MHz SO-DIMM memory
- 1 x M.2 2242/2260 key-M socket for SATA SSD
- 1 x SATA-III 2.5" HDD/SSD bay
- 1 x HDMI 2.0, 1 x DisplayPort 1.2, 1 x VGA output
- 4 x USB 3.0 (1 Type-C)
- 1 x RS-232 serial port
- 2 x Gigabit Ethernet LAN
- 802.11ac WiFi
- Hardware watchdog timer





MODELS	ZBOX PRO CI329 NANO	ZBOX PRO CI330 NANO	ZBOX PRO PI335 PICO	ZBOX PRO QK5P1000	ZBOX PRO QK7P3000
CPU	Intel Celeron	Intel Celeron	Intel Celeron	Intel Core i5	Intel Core i7
GPU	Intel UHD Graphics 600	Intel HD Graphics 400	Intel UHD Graphics 600	NVIDIA Quadro P1000	NVIDIA Quadro P3000
MEMORY	Dual DDR4	Dual DDR3L	Onboard LPDDR4	Dual DDR4	Dual DDR4
HDMI	x 1	x 2	x 1	x 4	x 4
DISPLAYPORT	x 1		x 1		
VGA	x 1	x 1			
USB 3.1					x 2
USB 3.0 TYPE-C	x 1		x 1		
USB 3.0	x 3	x 1	x 2	x 3	x 2
USB 2.0		x 2			x 2
LEGACY I/O	RS-232 Serial			RS-232 Serial	RS-232 Serial
WIFI	802.11ac				
LAN	Dual GLAN	GLAN	GLAN	Dual GLAN	Dual GLAN
BLUETOOTH			5	4.2	
WATCHDOG TIMER	YES	YES	YES	YES	YES
DIMENSIONS	160mm x 126.7mm x 58.7mm (6.30in x 4.99in x 2.31in)	160mm x 126.7mm x 50.7mm (6.30in x 4.99in x 2in)	115.0mm x 76.0mm x 26.7mm (4.53in x 2.99in x 1.05in)	210.0mm x 176.6mm x 44.4mm (8.27in x 6.95in x 1.75in)	227.0mm x 202.5mm x 62.5mm (8.94in x 7.97in x 2.46in)

EMBEDDED SOLUTIONS



SERIES

M SERIES

FUTURE FAST

**ZBOX M SERIES IS BUILT FOR SPEEDING
PERFORMANCE, NIMBLE VERSATILITY, AND
ENCOMPASSES FUTURE FAST TECHNOLOGIES INTO A
TINY PACKAGE OF MANY POSSIBILITIES.**

THE ALL-ROUNDER

Good for a single task, great at multi-functioning, and amazing for many needs. It's the home computer, the office workstation, the digital powerhouse behind the large single or multi-display digital billboard, the perfect thin client, the brains behind the casino or pinball machine, the living room entertainment, the server host, and the list of uses goes on and on.

SMALL AND SMALLER

Choose from multiple sized solutions that are all capable of powerful performance.

LAY IT, HIDE IT, HANG IT

Nimble versatility and mobility is provided by the designed VESA mounting compatibility built in or included stand accessory. Place the system where you want. Lay it on the desk, hide it behind a display, or hang it on the wall.

UPGRADEABLE

Easily get quick access to the internals to upgrade memory and storage with just the removal of a few screws.



ZBOX MI643 EDGE

The ZBOX M Series edge boasts an all-new design featuring an ultra-thin enclosure powered by an Intel® Core™ processor. With a smart thermal design, efficient power management, and a wide degree of open ventilation, the ZBOX edge maintains a significant low-profile design with a full set of I/O

connectivity. Process the IoT data generation with more efficient edge computing or power the everyday computing for enterprise, office, or home.

SPECIFICATIONS

- Intel Core i5-10210U (quad-core 1.6GHz, up to 4.2GHz)
- Intel UHD Graphics (Integrated)
- 2 x DDR4-2666/2400 SODIMM slot (up to 64GB)
- 2 x M.2 SSD slots
- 1 x HDMI 2.0, 1 x DisplayPort 1.2
- 4 x USB 3.1 Gen 2 ports (1 Type-C)
- 802.11ac WiFi & Bluetooth 5
- 2 x Gigabit Ethernet LAN





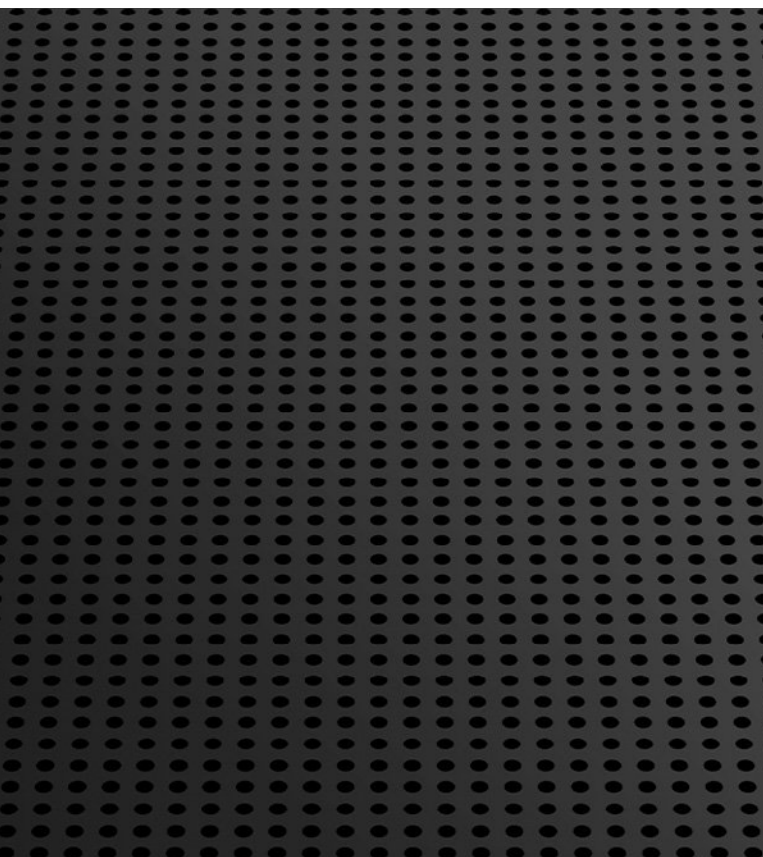
ZBOX MI662 NANO

Raise productivity to a whole new level with the ZBOX nano series with the 10th Generation Intel Core processor. Equipped with a powerful processor with an array of connectivity including USB 3.1 Type-C, HDMI and DisplayPort, tackle compiling complicated codes, see in 4K resolution at up to

60Hz, and much more. Whether it's the home, office or at the lab, the ZBOX nano series Mini PCs are the perfect suit.

SPECIFICATIONS

- Intel Core i7-10510U (quad-core 1.8GHz, up to 4.9GHz)
- Intel UHD Graphics (Integrated)
- 2 x DDR4-2666/2400 SODIMM slot (up to 32GB)
- 1 x 2.5" SATA 6Gbps HDD/SSD Slot
- 1 x HDMI 2.0, 1 x DisplayPort 1.2
- 6 x USB 3.1 Gen 2 ports (2 Type-C)
- 802.11ac WiFi & Bluetooth 5
- 2 x Gigabit Ethernet LAN





MODELS	ZBOX MI574	ZBOX EDGE MI643	ZBOX EDGE MI623
CPU	Intel Core i7	Intel Core i5	Intel Core i3
GPU	Intel UHD Graphics		
MEMORY	Dual DDR4		
HDMI	x 2	x 1	
DISPLAYPORT	x 1		
THUNDERBOLT 4			
USB 3.1 TYPE-C	x 1		
USB 3.1		x 3	
USB 3.0	x 6		
USB 2.0			
WIFI	WiFi 5		
LAN	Dual Gigabit LAN		
BLUETOOTH	Bluetooth 5		
DIMENSIONS	184.6mm x 184.6mm x 68.7mm (7.27in x 7.27in x 2.70in)	149.5mm x 149.5mm x 28.5mm (5.89in x 5.89in x 1.12in)	



MODELS	ZBOX MI662 NANO	ZBOX MI642 NANO	ZBOX MI622 NANO	ZBOX MA621 NANO
CPU	Intel Core i7	Intel Core i5	Intel Core i3	AMD Ryzen 3
GPU	Intel UHD Graphics			Radeon Vega 3 Graphics
MEMORY	Dual DDR4			
HDMI	x 1			
DISPLAYPORT	x 1			
THUNDERBOLT 4				
USB 3.1 TYPE-C	x 2			
USB 3.1	x 4			
USB 3.0	x 1			x 4
USB 2.0				
WIFI	WiFi 5			
LAN	Dual Gigabit LAN			
BLUETOOTH	Bluetooth 5			4.2
DIMENSIONS	127.8mm x 126.4mm x 50.8mm (5.03in x 4.98in x 2in)			



SERIES



PEERLESS INNOVATION, LIMITLESS CREATION

**ZBOX Q SERIES PROVIDES MINI WORKSTATION SOLUTIONS
INTEGRATING POWERFUL TECHNOLOGIES INTO AN ULTRA-SMALL
FORM FACTOR THAT STILL RESONATE BIG AND POWERFUL. THE
POTENTIAL TO CREATE ON A SCALE ONLY AVAILABLE WITH
PROFESSIONAL GRADE HARDWARE IN THE SMALLEST OF FORM
FACTOR, IS ONLY BOUND TO THE POWER OF YOUR IMAGINATION.**

NVIDIA® QUADRO®

The premiere visual computing platform that GPU Accelerates and powers the next generation of visual computing workflows like CAD rendering, 3D & VR creation, scientific and data calculations, and much more.

PROFESSIONAL PERFORMANCE

With up to an Intel Xeon workstation class processor, experience vivid content creation and fast, responsive, and energy efficient performance.

OPTIMIZED CONNECTIVITY

Connect as fast as possible. Featuring up to WiFi 6 wireless standards and Dual LAN ports with up to a 2.5Gbps Ethernet wired connectivity.



ZBOX QCM7T3000

With the professional-grade NVIDIA Quadro GPU, 6-core 10th Gen Intel® Core™ processor and Killer networking, the ZBOX QCM7T3000 delivers the best possible performance for demanding creative, scientific or financial computing projects.

SPECIFICATIONS

- Intel® Core™ i7-10750H processor (six-core 2.6 GHz, up to 5.0 GHz)
- NVIDIA Quadro RTX 3000 6GB GDDR6 192-bit
- 2 x DDR4-2933/2666 SO-DIMM slots (up to 64GB)
- M.2 PCIE x4 / SATA III SSD slot (2242/2280)
- 2.5-inch SATA 6.0 Gbps HDD/SSD bay
- Intel® Optane™ memory slot (2242/2280)
- 2 x HDMI 2.0, 2 x DisplayPort 1.4
- 2 x USB 3.1 Gen 2 ports (1 Type-C), 4 x USB 3.0 ports
- Killer Wi-Fi 6 and Killer 2.5Gbps Ethernet





MODELS	ZBOX QCM7T3000	ZBOX QX3P5000	ZBOX QX3P3000
CPU	Intel Core i7	Intel Xeon E-2136	Intel Xeon E-2136
GPU	NVIDIA Quadro RTX 3000	NVIDIA Quadro P5000	NVIDIA Quadro P3000
MEMORY	Dual SO-DIMM DDR4 slot		
HDMI	x 2	x 4	
DISPLAYPORT	x 2		
USB 3.1 TYPE-C	x 1		
USB 3.1	x 1	x 5	
USB 3.0	x 4		
THUNDERBOLT 3		x 1	
WIFI	WiFi 6		
LAN	Gigabit LAN + 2.5G LAN		
BLUETOOTH	Bluetooth 5		
DIMENSIONS	210mm x 203mm x 62.2mm (8.27in x 7.99in x 2.45in)	225mm x 203mm x 128mm (8.86in x 7.99in x 5.04in)	

PEERLESS INNOVATION,
LIMITLESS CREATION



INSPIRE
STUDIO

CREATE TODAY. IMAGINE TOMORROW.

INSPIRE STUDIO IS BUILT TO EXPAND YOUR CREATIVE WORKFLOWS. WITH AN ALL-WHITE EXTERIOR, INSPIRE STUDIO HAS ALL YOU NEED TO IMAGINE AND CREATE IN ONE OF THE MOST COMPACT FORM FACTOR SYSTEMS.

NVIDIA GEFORCE STUDIO DRIVERS

The NVIDIA GeForce Studio drivers supercharges your creative process. The ZOTAC GAMING GeForce RTX 2060 SUPER paired with the NVIDIA GeForce Studio drivers enhance creative apps with a level of performance and ability that is nothing short of inspiring.

HIGH SPEED PERFORMANCE

We take the mainstream 65W desktop Intel® Core™ i7 processor packing 8-cores and package it into Inspire Studio to power through CPU intensive workloads. Paired with fast 32GB DDR4 memory, 512GB NVMe M.2 SSD, a 2TB HDD, and Microsoft Windows 10 Pro 64-bit OS, Inspire Studio enables creative professionals to create today and imagine more of tomorrow. Get more and boost overall system performance and take advantage of the available Intel Optane™ memory slot.

FULL FEATURED CONNECTIVITY

Inspire Studio provides flexibility and full featured connectivity with a wide array of ports featuring dual LAN, six USB 3.1 Gen2 ports including one Type-C connector, and three DisplayPort 1.4 and HDMI 2.0 for a multi-display setup of up to 4 displays. Support of the latest Bluetooth 5 and fast Killer WiFi-6 AX1650 enable faster wireless connectivity and a seamless experience.



INSPIRE STUDIO SCF72060S

Equipped with a multi-core Intel® Core™ processor and a ZOTAC GAMING GeForce® RTX SUPER™ desktop graphics card featuring dedicated ray-tracing cores and support for

GPU acceleration, the compact-sized, creator focused system speeds up your workflow and shortens wait times in today's most-used creative applications.

SPECIFICATIONS

- Intel® Core™ i7-9700 processor (8-core 3.0 GHz, up to 4.7 GHz)
- ZOTAC GAMING GeForce RTX 2060 SUPER™ (8GB GDDR6 256-bit)
- 32GB DDR4 Memory
- 512GB NVMe M.2 SSD
- Intel Optane Memory ready
- 2TB HDD Storage
- HDMI 2.0b, 3 x DisplayPort 1.4
- 6 x USB 3.1 port (1 Type-C)
- Killer Wi-Fi 6 & Bluetooth 5
- 2 x 10/100/1000 Ethernet (1 x Killer Ethernet)
- Microsoft Windows 10 Pro 64-bit Pre-installed (Europe regions have Microsoft Windows 10 Pro N)
- Dimensions: 225mm x 203mm x 128mm (8.86in x 7.99in x 5.04in)



COMPARE

ZBOX SERIES

	INSPIRE STUDIO	VR SERIES	Q SERIES	E SERIES	M SERIES	P SERIES	C SERIES	PRO SERIES
4K	◆	◆	◆	◆	◆	◆	◆	◆
DISCRETE GRAPHICS	◆	◆	◆	◆				◆*
VR READY	◆	◆	◆*	◆*				◆*
FANLESS						◆	◆	◆*
M.2 SUPPORT	◆	◆	◆	◆	◆*			◆*
2.5-INCH STORAGE BAY	◆	◆	◆	◆	◆		◆	◆*
OPTANE MEMORY	◆		◆*	◆*	◆*			
THUNDERBOLT 4					◆*		◆*	
THUNDERBOLT 3			◆*		◆*		◆*	
USB 3.1 GEN2	◆		◆*	◆*	◆*		◆*	◆*
HDMI	◆	◆	◆	◆	◆	◆	◆	◆
DISPLAYPORT	◆	◆	◆	◆	◆	◆*	◆	◆*
VGA							◆*	◆*
MOUNTABLE			◆*		◆*	◆	◆	◆
POWER RECOVERY	◆	◆	◆	◆	◆	◆	◆	◆*
SD/SDHC/SDXC CARD READER	◆	◆	◆	◆	◆		◆	◆*
MICRO SD/SDHC/SDXC CARD READER						◆		◆*
LAN PORT	◆	◆	◆	◆	◆	◆*	◆	◆
DUAL LAN	◆		◆	◆	◆*		◆*	◆*
WIFI	◆	◆	◆	◆	◆	◆	◆	◆
BLUETOOTH	◆	◆	◆	◆	◆	◆	◆	◆*
HARDWARE WATCHDOG								◆*
EDID EMULATION								◆*

*SELECT MODELS

CHOOSE YOUR OWN ZBOX

CHOOSE
YOUR
OWN
ZBOX



BAREBONE

FOR THE D.I.Y USERS

With our barebones ZBOX Mini PCs, install memory and storage you need and your desired OS. Make it YOUR OWN ZBOX Mini PC.

WINDOWS

THE COMPLETE SYSTEM

Select ZBOX Mini PCs come pre-installed with memory, storage, and operating system. Simply connect your keyboard, mouse, and display of your choice and power on the system. You'll be ready to go within minutes.

AWARDS



COMPUTEX d&i Special awards 2021

ZBOX MAGNUS ONE



reddot winner 2021

Red Dot Design Award 2021

ZBOX MAGNUS ONE



reddot winner 2020

Red Dot Design Award 2020

ZBOX M Series edge



iF Design Award 2019

ZOTAC VR GO 2.0



COMPUTEX d&i awards 2018

ZBOX CI660 nano

ZOTAC VR GO 2.0



iF Design Award 2018

ZBOX PI225 pico



European Hardware Awards 2017

ZBOX MAGNUS EN1060



COMPUTEX d&i awards 2017

ZOTAC VR GO



COMPUTEX d&i awards 2016

ZBOX PI221 pico

ZBOX MI545 nano

MEDIA REVIEWS

"The ZBOX nano has a high build quality and surprisingly good performance."

PC Perspective

"Small powerhouse! When it comes to small PCs, ZOTAC is well known to many."

NOTEBOOKCHECK

"ZOTAC's small-form-factor machine gets plenty right, starting with its diminutive size and sensible design – it's small enough to fit into tiny spaces, and the included stand and VESA mount add versatility."

Techradar

"ZOTAC may be known for their graphics cards and we've found them to be quite the performers here on the site, but they're also pretty big on the small form factor PCs as well."

Wccftech

"A true example of 'good things come in small packages.'"

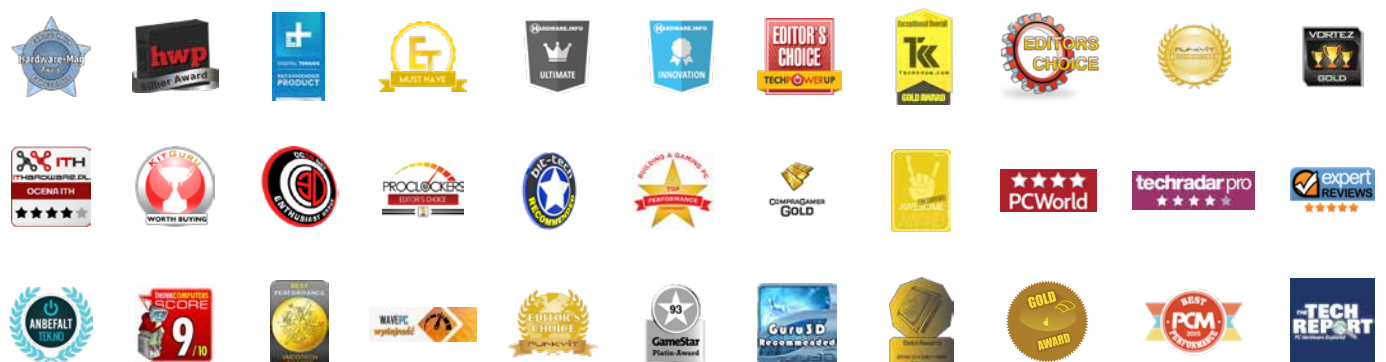
XSReviews

"ZOTAC definitely has my attention now, and I'm fascinated to see how this march of the mini-PC progresses."

Forbes

"It could easily hold on its own against desktop AIOs and even powerful gaming notebooks."

Hardwarezone



INNOVATING THE PC IN EVERY BEST MINI WAY

If you need more information or have question about our product, please write to **marketing@zotac.com**

FACEBOOK /ZOTAC

TWITTER /ZOTAC

INSTAGRAM /ZOTAC_OFFICIAL

YOUTUBE /ZOTAC_OFFICIAL

VIMEO /ZOTAC

ZOTAC.COM